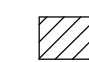
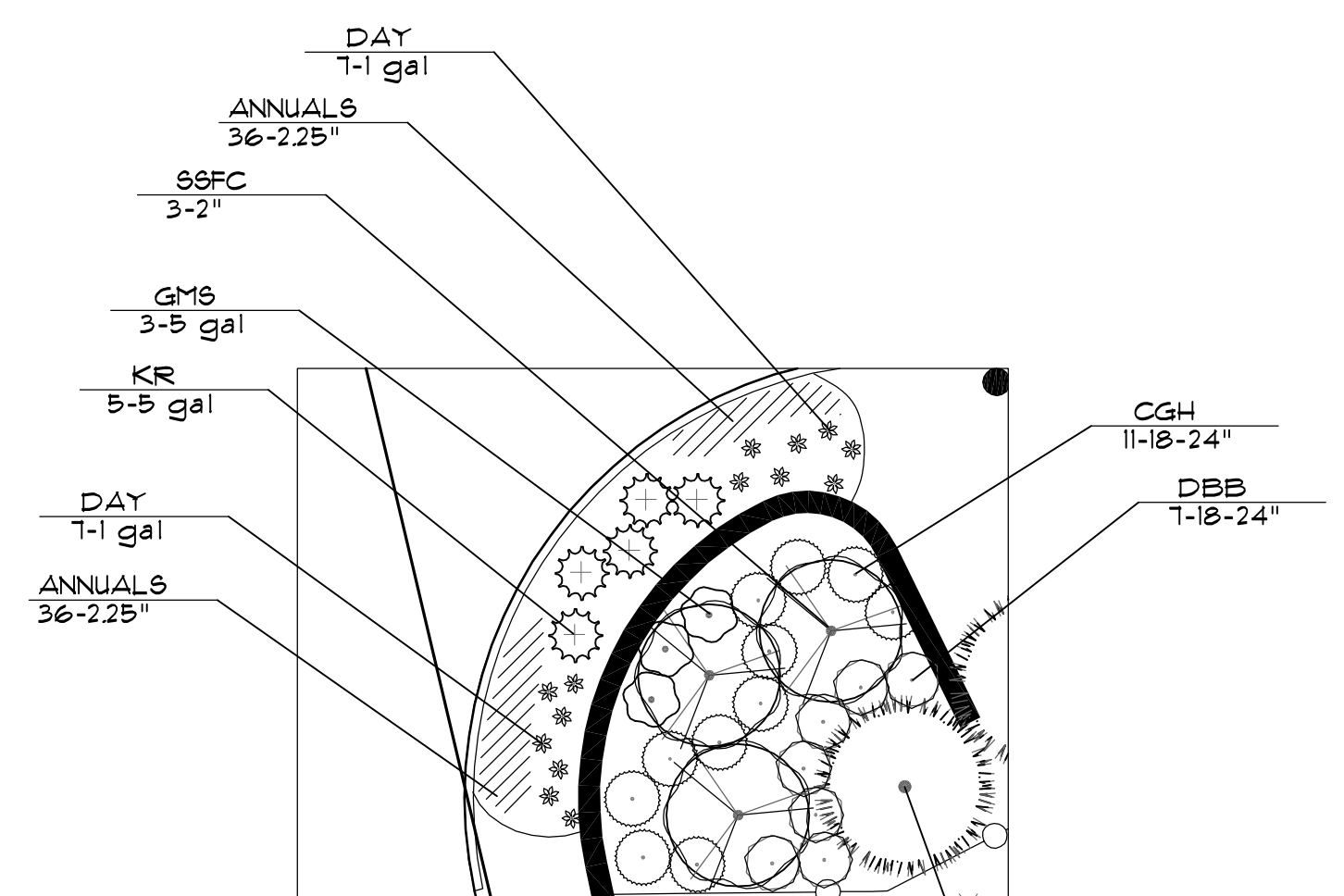
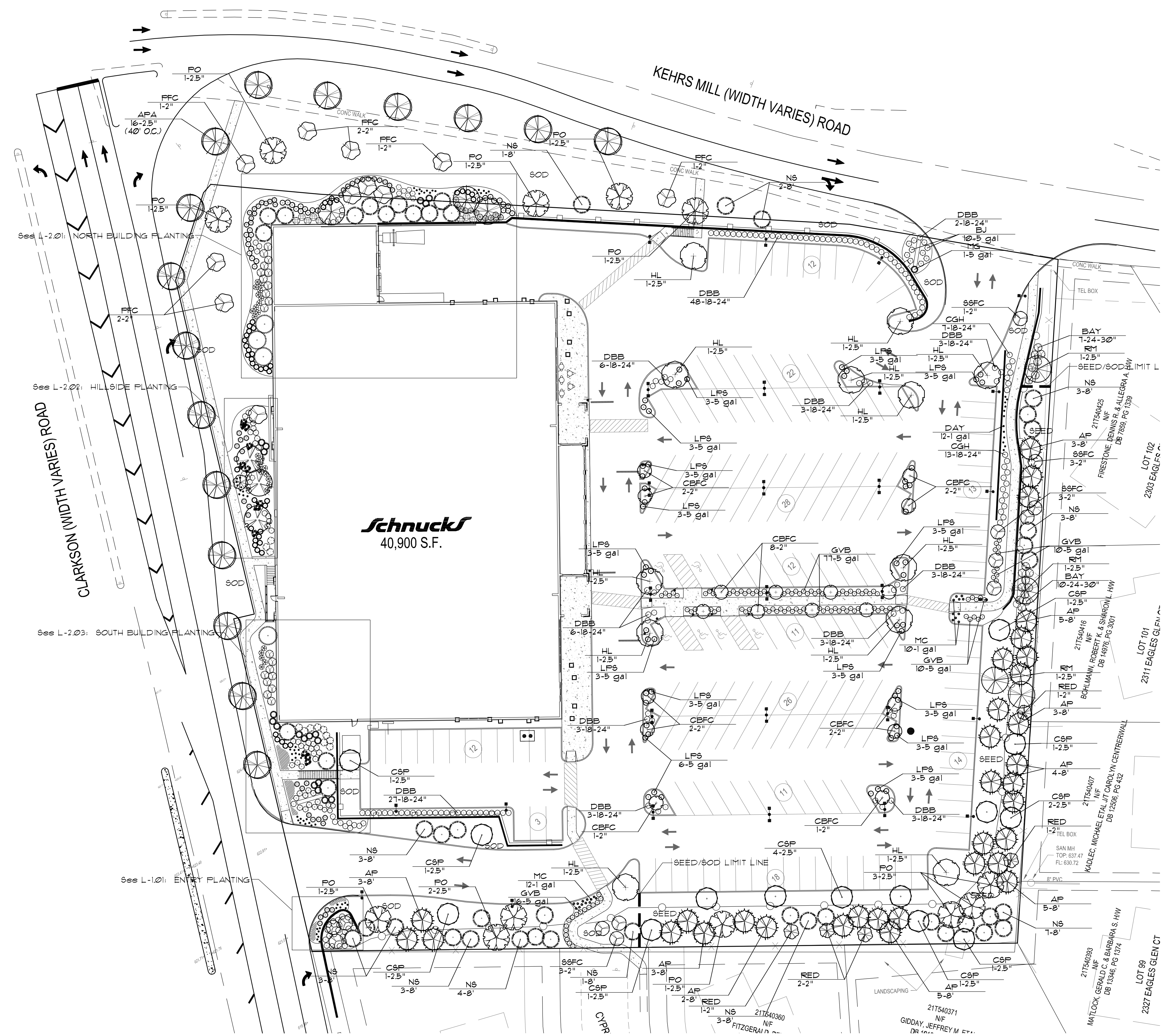


**PLANT-SCHEDULE**

SYM	COMMON	CONT	QTY
RM	Red Maple	2.5"	7
CRB	Clump River Birch	12-15'	3
RED	Eastern Redbud	2"	6
AFA	Autumn Purple Ash	2.5"	16
HL	Honeylocust	2.5"	12
CBFC	Coralburst Fl. Crab	2"	18
FFC	Prairiefire Fl. Crab	2"	11
SSFC	Spring Snow Fl. Crab	2"	13
NS	Norway Spruce	8'	47
SERB	Serbian Spruce	8'	4
AP	Austrian Pine	8'	33
CSP	Cleveland Select Pear	2.5"	14
PO	Pin Oak	2.5"	12
GVB	Green Velvet Boxwood	5 gal	113
MC	Moonbeam Coreopsis	1 gal	22
DBB	Duf. Burning Bush	18-24"	137
DAY	Daylily	1 gal	73
BH	Blue Holly	18-24"	12
CGH	China Girl Holly	18-24"	57
ITEA	Henry's Garnet Itea	5 gal	14
SGJ	Sea Green Juniper	18-24"	11
BJ	Broadmoor Juniper	5 gal	23
MG	Maiden Grass	5 gal	20
BAY	Northern Bayberry	24-30"	37
DFG	Dwarf Fountain Grass	5 gal	44
KR	Knockout Rose	5 gal	46
GF6	Goldflame Spirea	5 gal	30
GM6	Goldmound Spirea	5 gal	3
LP6	Little Princess Spirea	5 gal	53
DY	Dense Yew	5 gal	26
BURKI	Burkwood Viburnum	24-30"	8
DBLV	Doublefile Viburnum	24-30"	12
	ANNUAL	2.25"	216

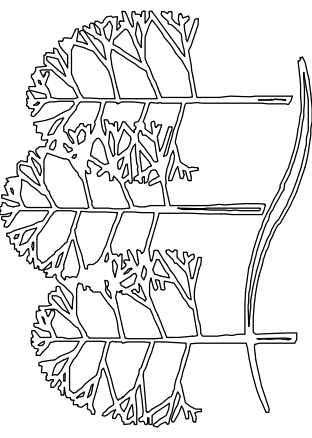


**L-1.01: ENTRY PLANTING:**  
(2 total) Scale: 1" = 10'



Drawn by:	CJA
Scale:	1" = 30'
Date:	3-16-09
Revised:	4-16-09

**BAXTER FARMS and NURSERIES**  
3411 CREVE COEUR MILL ROAD  
ST. LOUIS, MISSOURI 63146  
314.542.9400



**Schnucks**  
Ballwin, MO  
Prepared For: Kuhlmann Design Group

Landscape Planting Plan For:  
**Schnucks**  
Ballwin, MO  
Prepared For: Kuhlmann Design Group

Drawing Number:  
**L-1**  
of two